

WINTHROP - PLAN M2815A3FA-0

Total Area: 2815 sq. ft.
Garage Area: 1025 sq. ft.
Garage Area: 1025 sq. ft.
Garage Size: 3
Stories: 2
Bedrooms: 4
Full Baths: 4
Width: 90'-0"
Depth: 89'-0"
Height: 26'-6"
Foundation: Crawl Space

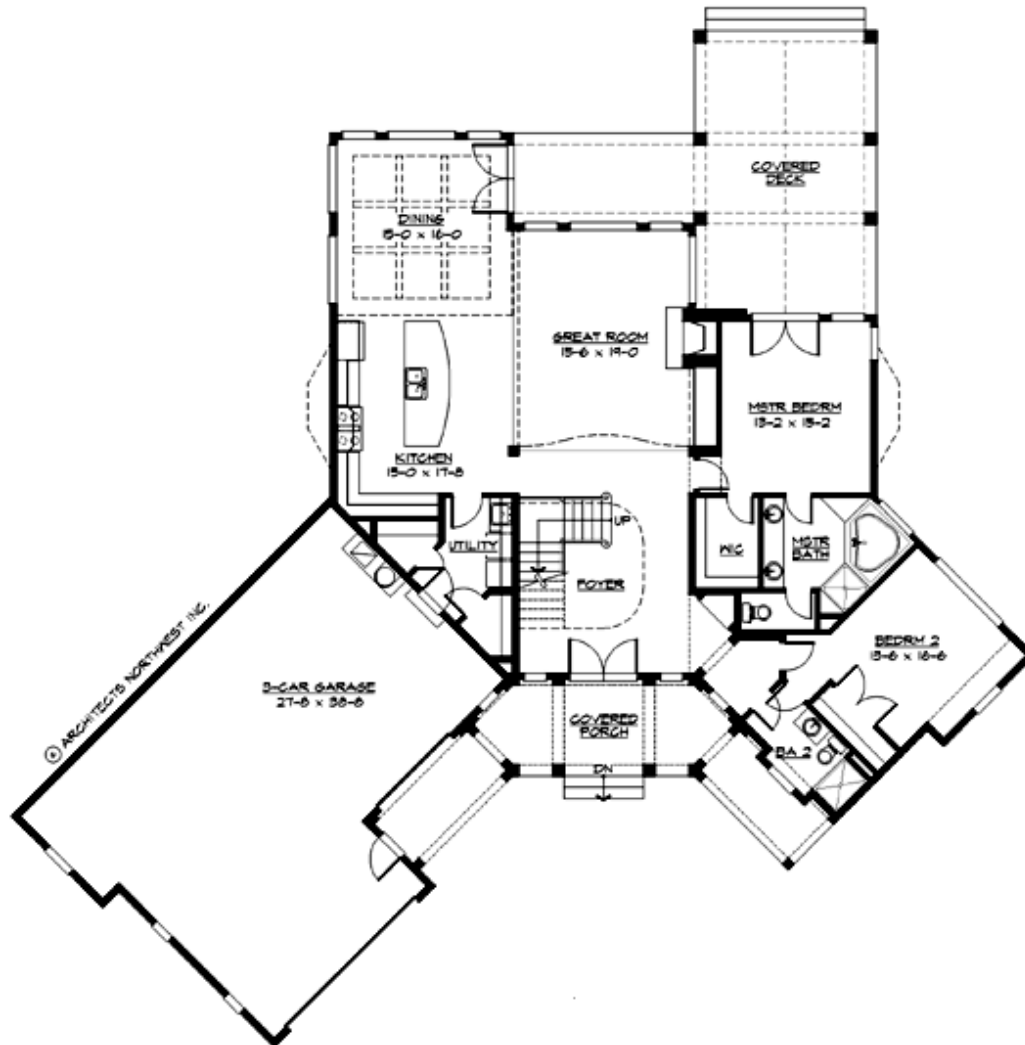


A Graceful Country Lodge Embraces the Outdoors.

This stunning rustic craftsman is perfect for a view lot. The large, columned porch creates a friendly feeling on approach. The gently angled plan with its sheltering rooflines, highlighted by robust curved brackets, conveys a sense of elegance and repose. The Winthrop's large, covered decks provide space for year-round outdoor living. The open interior features a dramatic bridge across the 2-story great room, a chef's kitchen, dining space with beamed dining, a convenient main-floor master suite, guest suite and laundry. Two upstairs secondary bedrooms with ensuite baths complete the plan.

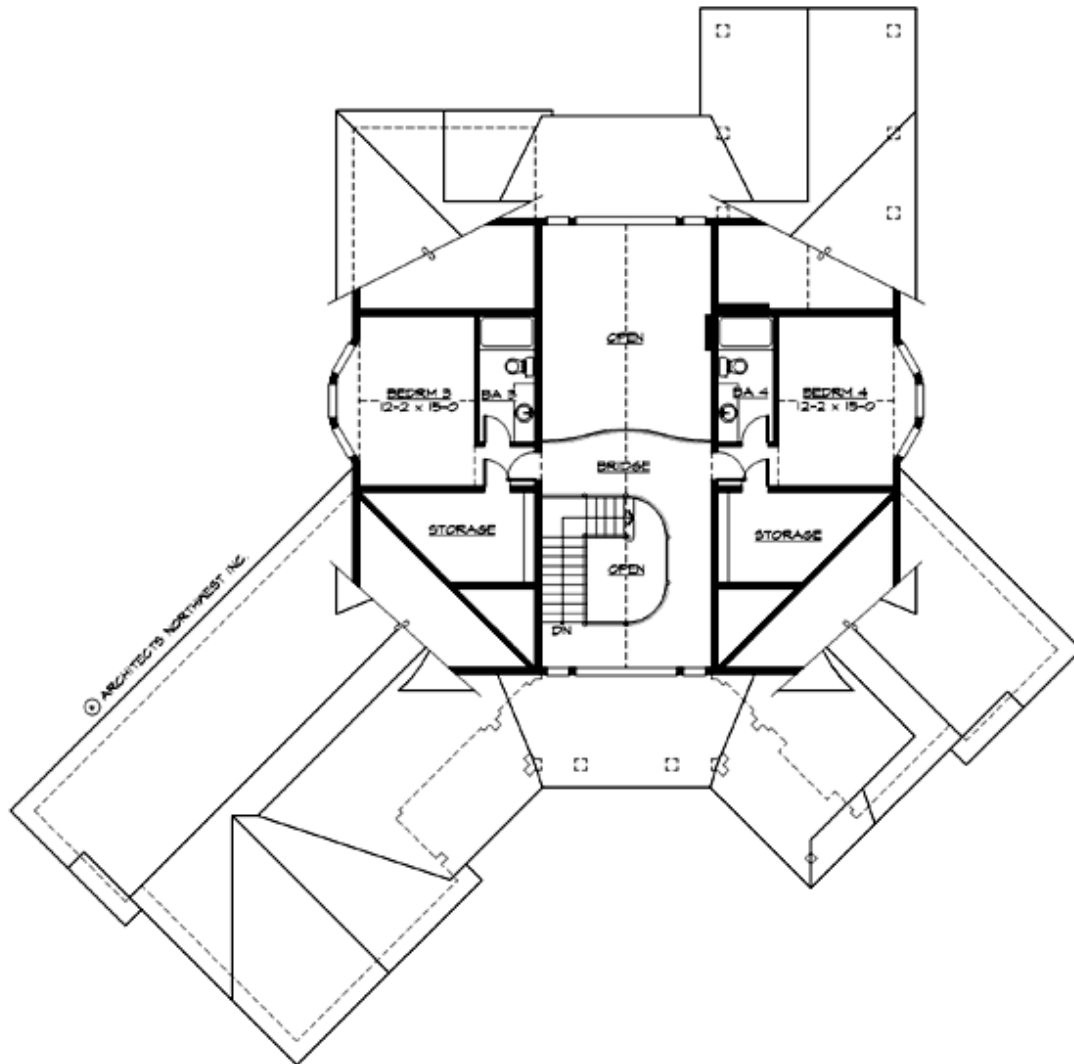
WINTHROP - PLAN M2815A3FA-0

MAIN FLOOR



WINTHROP - PLAN M2815A3FA-0

UPPER FLOOR



WINTHROP - PLAN M2815A3FA-0

PLAN DETAILS

Area Summary

Total Area: 2815 sq. ft.
Main Floor: 2065 sq. ft.
Upper Floor: 750 sq. ft.
Garage Floor: 1025 sq. ft.

General Information

Stories: 2
Width: 90'-0"
Depth: 89'-0"
Height: 26'-6"

Architectural Style

Cottage
Shingle
Traditional

Number of Rooms

Bedrooms: 4
Full Baths: 4

Garage

Garage Size: 3
Garage Door Location: Front
Garage Type: Angled

Roof Pitches

Primary: 8:12
Secondary: 4:12

Wall Heights

Main: 9'-0"
Upper: 9'-0"
3rd Floor: 0'-0"
Lower: 0'-0"

Foundation Type

Crawl Space

Roof Framing

Trusses

Floor Load

Live (lbs): 40 PSF
Dead (lbs): 10 PSF

Roof Load

Live (lbs): 25 PSF
Dead (lbs): 15 PSF
Wind: 85 MPH

Design Features

- Best Selling Plan
- Great Room
- Laundry Room @ Main Floor
- Master Bedroom @ Main Floor Rear
- Rear Porch
- View Lot - Rear
- Wide Lot